

SANDVIK



# Herema

RECYCLING MACHINERY



PRONAR



# MRW 2.85 / 2.85g / 2.85h / 2.1010

MOBILE SLOW-SPEED SHREDDERS



**Pronar mobile slow-speed shredders are designed for primary shredding different types of materials.**

Machines can be used for shredding municipal green, industrial, construction waste, pallets, tree cutting residues, tree stumps, bulky and oversized materials, light scrap.

Working element consists of two synchronised shredding shafts placed in the working chamber. Working elements are manufactured from wear-resistant materials, which ensures longlife and failure-free operating.

Depending on the chassis type, the shredders can be moved around area at any moment without the use of towing vehicles(tracked chassis) or towed on roads up to 100km/h (wheeled chassis).



Conveyor belt speed rate adjustment



Machine operating mode indicator - for status check and security warnings



Working chamber made of wear-resistant materials which significantly increase lifetime of the machine



Central control panel with touchscreen

Remote control for basic machine operating functions



Hydraulic support legs ensures stability of machine



Hydraulic tipping chute allows to feed over-sized material into working chamber



European road homologation for transport up to 100km/h



Central lubrication system ensures good greasing of most important parts of the machine



Cleanfix systems automatically clean engine and oil hydraulics radiators







MRW 2.1010 - municipal waste



MRW 2.85 - green waste



MRW 2.1010 - municipal waste

**Magnetic separator** for extraction of ferromagnetic materials.



**Ball coupling** enables repositioning of the shredder using construction machinery.



**Working area additional lights** increase safety near the machine



Different types of **shredding shafts** available







MRW 2.85h – municipal waste



MRW 2.85g – municipal waste



MRW 2.85he – municipal waste

MRW 2.85h - carrying by hooklift frame carriers



MRW 2.85h - drag wheel for moving on working place



MRW 2.85 SELF CRAWLER - self-propelled system



Inspection windows of the working chamber for easy cleanout and maintenance







MOBILE SLOW-SPEED SHREDDER

# MRW 2.85 / 2.85g / 2.85h / 2.1010



CHASSIS:	MRW 2.85
Total weight [kg]	~ 24000
Dimension (length/width/height) [mm]	8850x2550x4000
Max speed [km/h]	100
Brake system	Pneumatic with EBS
ABS configuration	4S/2M
Brake type	Drum
Additional Power supply to EBS system	+
Type of attachment mechanism	Machanical
Number of wheels	6
Tyre dimensions	435/50 R19,5 (160J)
Axle manufacturer	ATW / ADR
Number of axles	3
Max axle load [kg]	9000
Front support legs [pcs]	1
Rear support legs [pcs]	2
Road light voltage [V]	24 (12)
Type of Road lights	LED
Drawbar eye diameter [mm]	50
Drawbar height from ground (adjustable) [mm]	950 (± 110)
Mud flaps	+
Wheel chocks	+
Contour markings	+
Beacon light	+
Toolbox	+
Rear removable bar	+
Marking plates	+

TRACKED CHASSIS	MRW 2.85g	MRW 2.1010
Total weight [kg]	26380	~40000
Dimension (length/width/height) [mm]	7800/2550/3200	9500/3000/3200
Number os speeds	2	2
Approach Angle (front/rear) [°]	20 / 15	21 / 14

HOOKLIFT CHASSIS	MRW 2.85h
Total weight [kg]	~18000
Dimension (length/width/height) [mm]	7370/2550/2700
Number of wheels	2
Hooklift standard	DIN 30722-1

SHREDDING SYSTEM	MRW 2.85	MRW 2.85g	MRW 2.85h	MRW 2.1010
Dimension of working shafts (length/diameter) [mm]	1700 / 685	1700 / 685	1700 / 685	2440 / 850
Shaft speed [rpm/min]	44	44	37	34
Number of shafts [Pcs.]	2	2	2	2
Work chamber dimension (length/width) [mm]	1720 / 2340	1720 / 2340	1720 / 2340	2440 / 2880
Loading height [mm]	3150	3200	2450	3200
Hopper capacity [m³]	~ 3,0	~ 3,0	~ 3,0	~ 4,5
Transport belt width [mm]	1400	1400	1400	1400
Control voltage [V]	24	24	24	24
Central lubrication system	+	+	+	+
Belt speed regulation	+	+	+	+
Operation signal lights	+	+	+	+
Hydraulically lifted loading hopper	+	+	+	+
Loading hopper and shafts made of wear-resistant steel	+	+	+	+

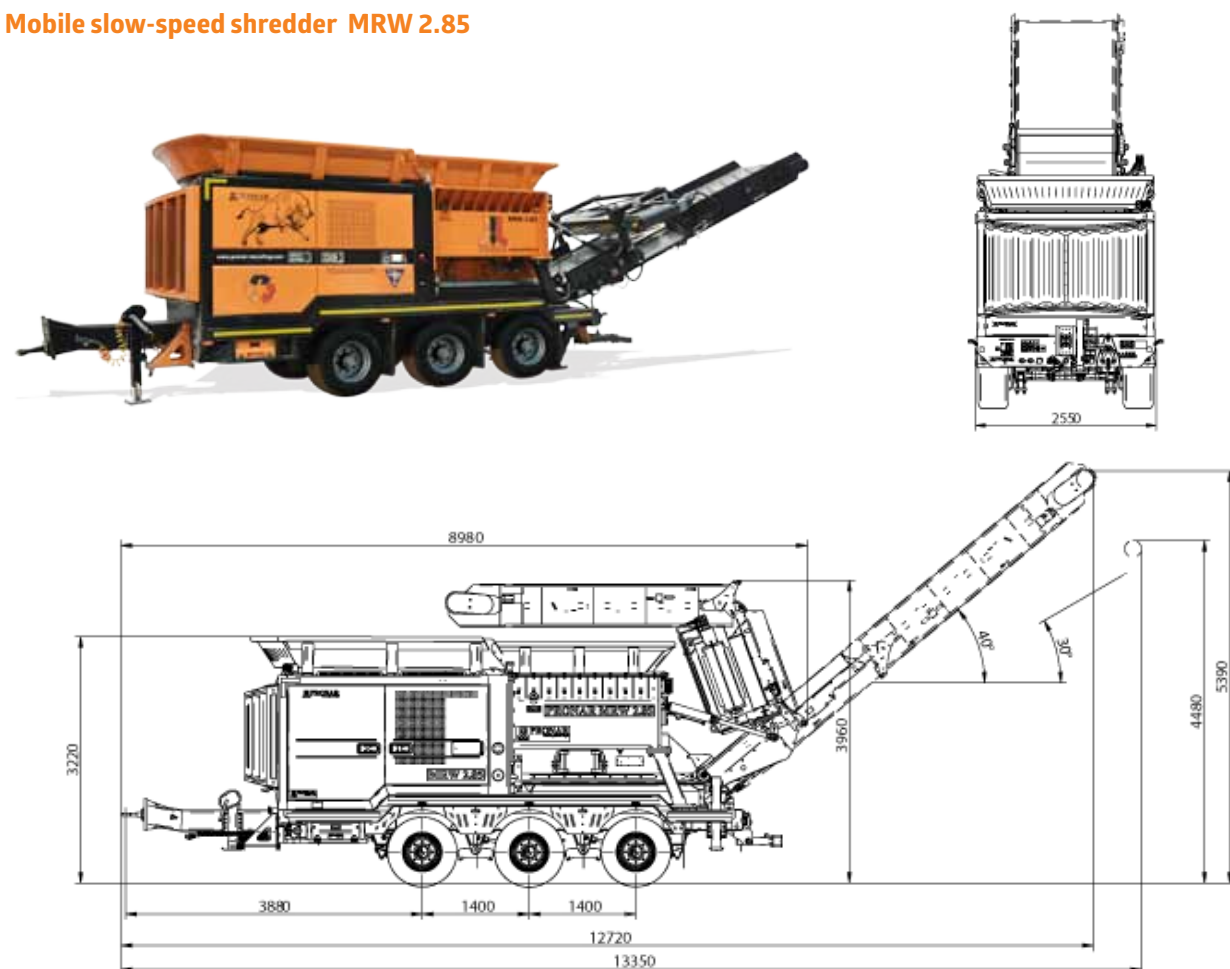
ADDITIONAL EQUIPMENT:	MRW 2.85	MRW 2.85g	MRW 2.85h	MRW 2.1010
Bar between shafts	+	+	+	+
Magnetic separator	+	+	+	+
Ball coupling	+	n.a	+	n.a
Drawbar eye: ø57 (Swedish standard)	+	n.a	+	n.a
Lighting of working areas	+	+	+	+
Road lighting adapter 15 pin - 2x7 pin (std 15 pin - 15 pin)	+	n.a	n.a	n.a
Shafts according to customer requirements	+	+	+	+

DRIVE:	MRW 2.85	MRW 2.85g	MRW 2.85h	MRW 2.1010
Diesel engine	Caterpillar (EU Stage 4, 9.3 l – 298 kW (405 HP) / 2200 rpm)  Volvo Penta (EU Stage 4, 13 l – 315 kW (428 HP) / 1900 rpm)	Caterpillar (EU Stage 4, 9.3 l – 298 kW (405 HP) / 2200 rpm)  Volvo Penta (EU Stage 4, 13 l – 315 kW (428 HP) / 1900 rpm)	Caterpillar (EU Stage 4, 9.3 l – 298 kW (405 HP) / 2200 rpm)  –	Volvo Penta (EU Stage 2, 16.1 l – 565 kW (768 HP) / 1850 rpm)  –
Electric engine (shafts + hydraulics)	250 kW (340 HP) + 15 kW (20 HP)	–	250 kW (340 HP) + 15 kW (20 HP)	–
Fuel tank capacity [l]	700	700	700	1200
Cleanfix system for engine cool- ing system	+	+	+	+
Cleanfix system for hydraulic oil cooler	+	+	+	+
Lighting for engine area	+	+	+	+

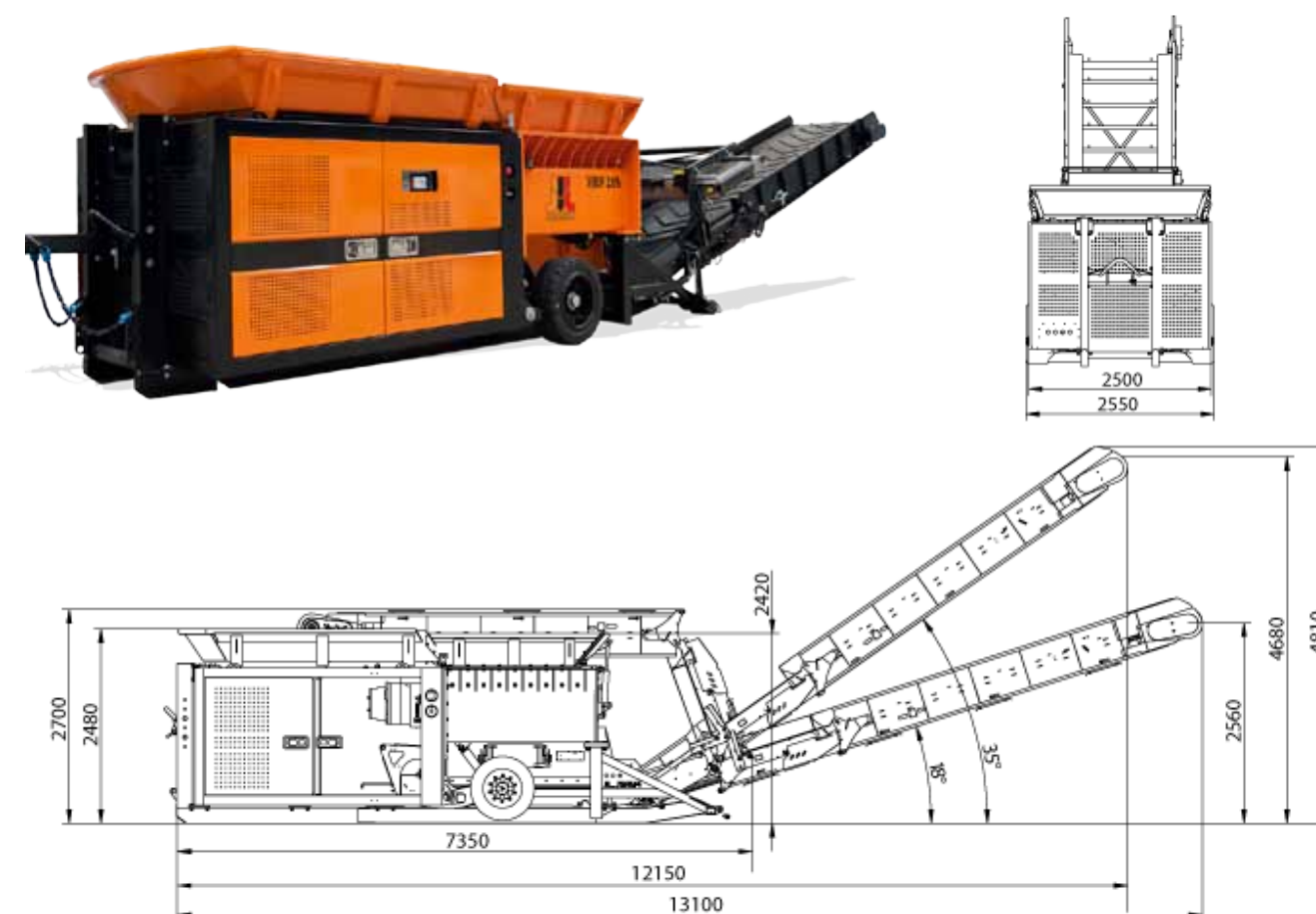
- Advantages:**
- \* Processing of a wide range of materials
  - \* Easy service thanks to easy access to engine area
  - \* Remote control as a standard
  - \* Shredding chamber inspection doors on both sides
  - \* User-friendly control panel
  - \* Shaft automatic self-cleaning system
  - \* Cleanfix sytem for engine radiator and hydraulic oil cooler
  - \* High efficiency
  - \* Shredding chamber made from top -quality materials

MOBILE SLOW-SPEED SHREDDERS  
**MRW 2.85 / 2.85g / 2.85h / 2.1010**

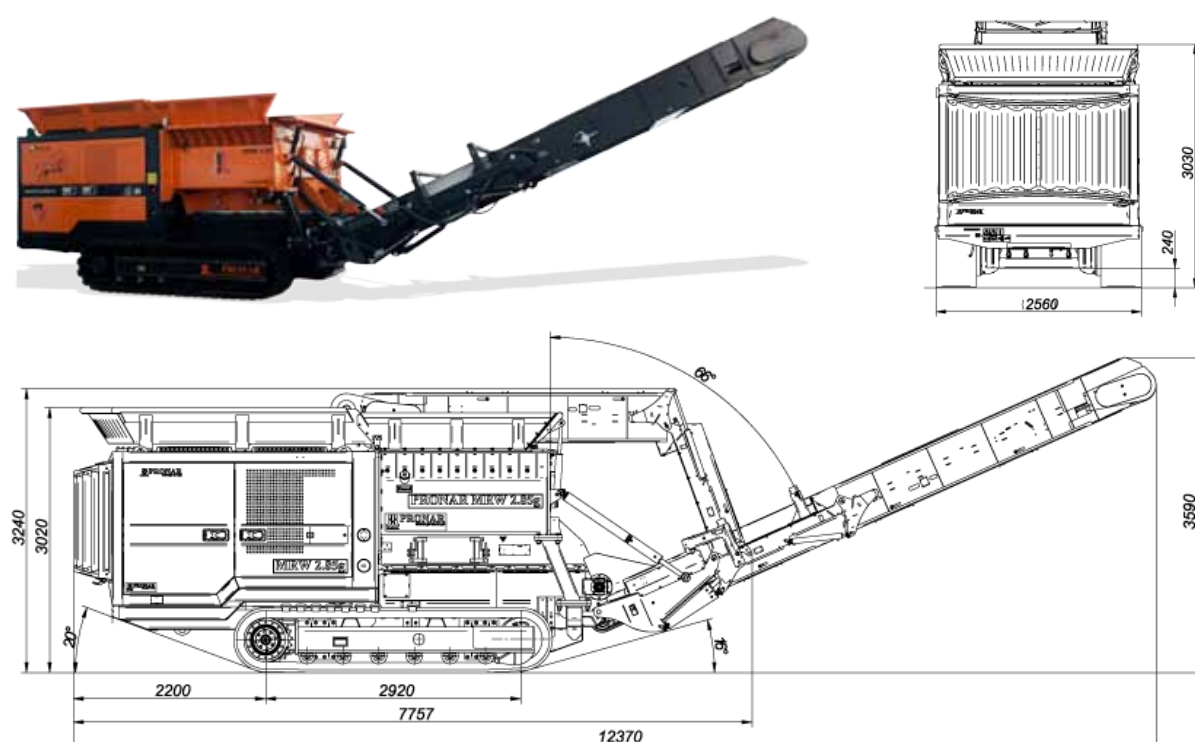
Mobile slow-speed shredder MRW 2.85



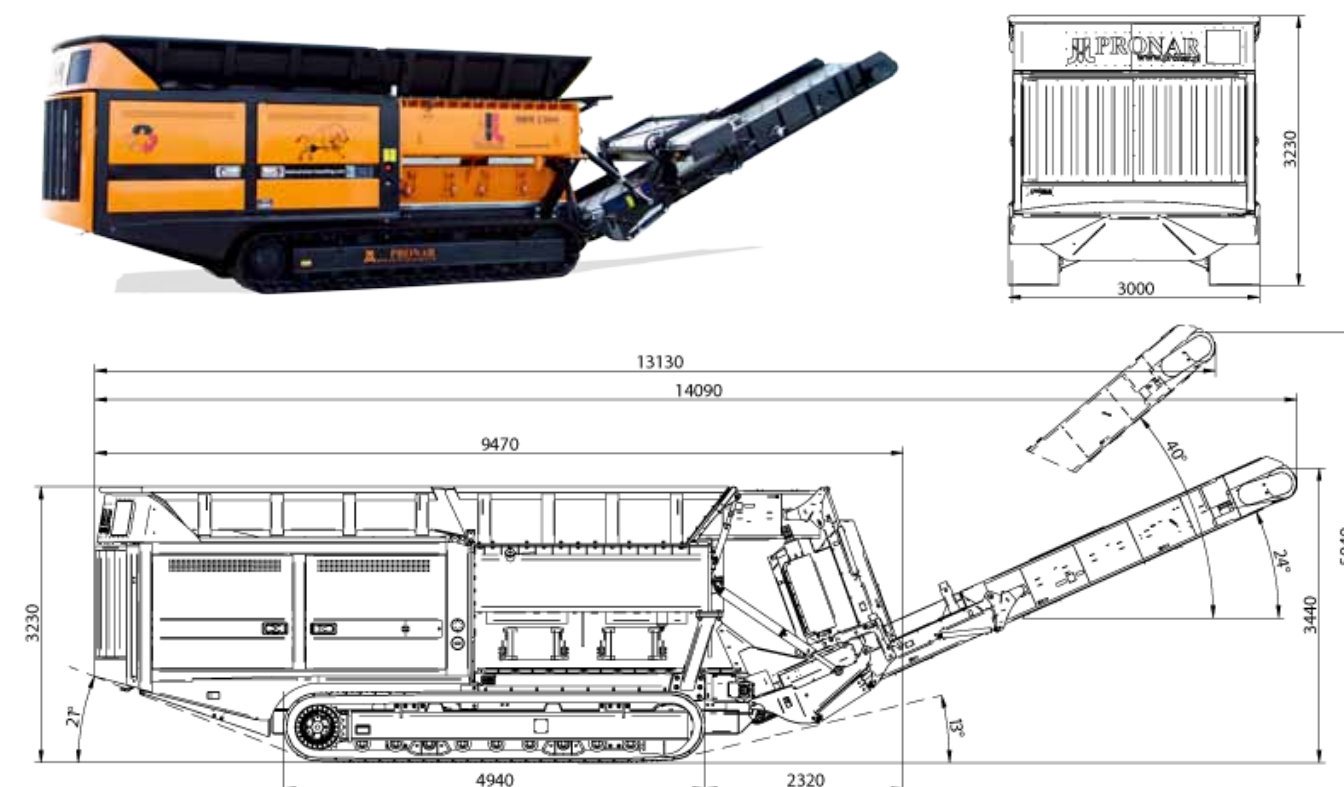
Mobile slow-speed shredder on hooklift chassis MRW 2.85h



Mobile slow-speed shredder on tracked chassis MRW2.85g



Mobile slow-speed shredder on tracked chassis MRW 2.1010







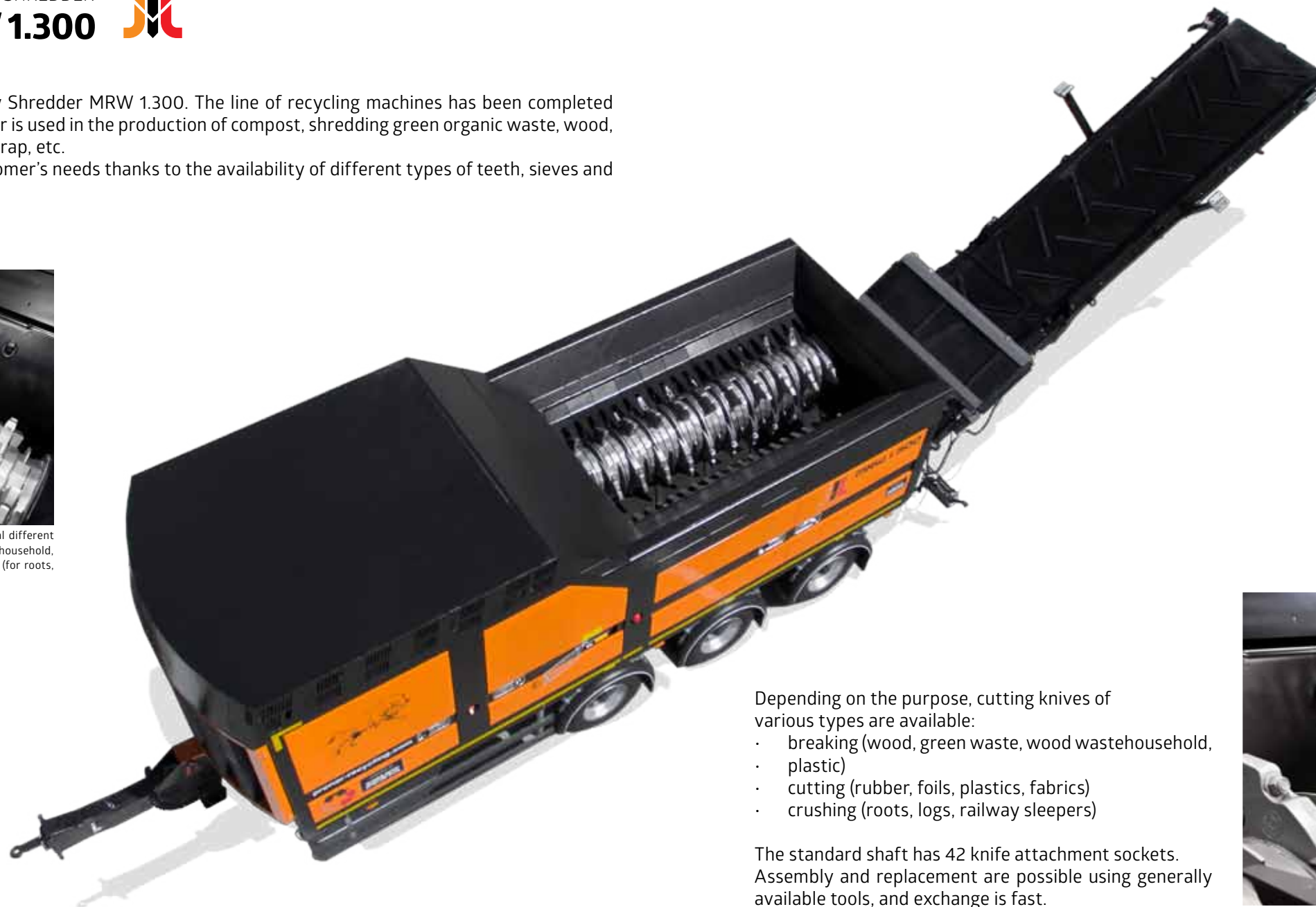
Pronar introduced the new Mobile Slow Shredder MRW 1.300. The line of recycling machines has been completed with a single-shaft machine. The shredder is used in the production of compost, shredding green organic waste, wood, biomass, paper, plastics and foil, small scrap, etc. The machine can be adapted to the customer's needs thanks to the availability of different types of teeth, sieves and counter-knives.



Single shaft with max. 27 rpm. Depending on the input material different types of knives are available: breakers (for wood, green waste, household, plastic), cutting (for rubber, foil, plastics, fabrics) and crumbling (for roots, logs, railway sleepers)



**Magnetic separator** for separating ferrous elements from shredding material



Depending on the purpose, cutting knives of various types are available:

- breaking (wood, green waste, wood waste, household, plastic)
- cutting (rubber, foils, plastics, fabrics)
- crushing (roots, logs, railway sleepers)

The standard shaft has 42 knife attachment sockets. Assembly and replacement are possible using generally available tools, and exchange is fast.



**Counter knives.** The grinding system tilting beam system with counter-knives ensures long operations of the shredder allows removal of large, unbreakable materials - longer and troublefree operations of the machine. The standard electric reverse allows you to rotate the shaft in any direction without starting the combustion engine to remove blockages



**The standard shaft has 42 knife attachment sockets.** Assembly and replacement are possible using generally available tools, and exchange is fast.

**Engine** - Volvo Penta (Stage 4, 550 hp/ 405 kW)



**Cleanfix.** Facilitates work in difficult conditions - automatic cleaning of oil cooler



**Axles.** Equipped with ABS and traction control. European homologation allows driving with speed up to 100 km / h.h.





THREE-AXLE CHASSIS		MRW 1.300
Total weight [kg]		25 00
Overall dimensions (length / width / height) [mm]		10 000 x 2500 x 3700
SHREDDING SYSTEM		MRW 1.300
Number of shafts [Pcs.]		1
Dimension of working shafts (length/diameter) [mm]		3000 / 970
Shaft speed [rpm]		27
Loading height [mm]		2850
Working chamber dimension (length/width) [mm]		3650 / 2200
DRIVE		MRW 1.300
Diesel engine		Volvo Penta (EU Stage 4, 12,8 L, -MAX: 405 kW (550 HP) / 1900 rpm)

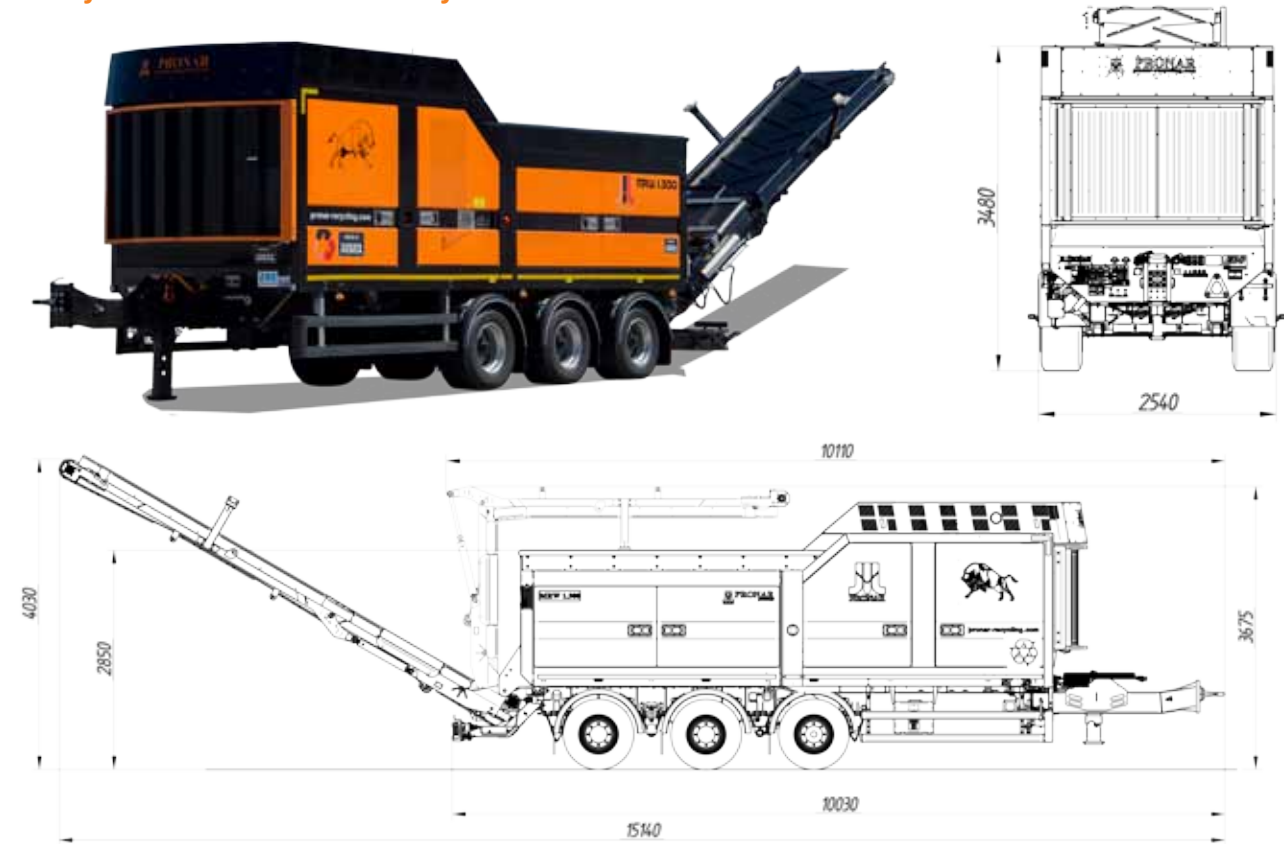
Features and Standard equipment:

- Electric reverse
  - Tilting bar system with counter knives
  - User-friendly knives replacement system
  - Hydraulic front supporting leg
  - Cleanfix system for engine cooler system
  - Central lubrication system
  - Remote control
  - Large spacious doors with easy access to the engine and hydraulics
  - Engine compartment lighting
- Stepless speed regulation of the conveyor
  - Demountable bar with lights
  - ABS and traction control (permissible speed up to 100 km / h)
  - Fuel tank with a capacity of 640l

Additional and optional equipment:

- Ball coupling
- Magnetic separator
- Lightning of working areas
- Cutting knives of various types

Mobilny rozdrabniacz wolnoobrotowy MRW 1.300



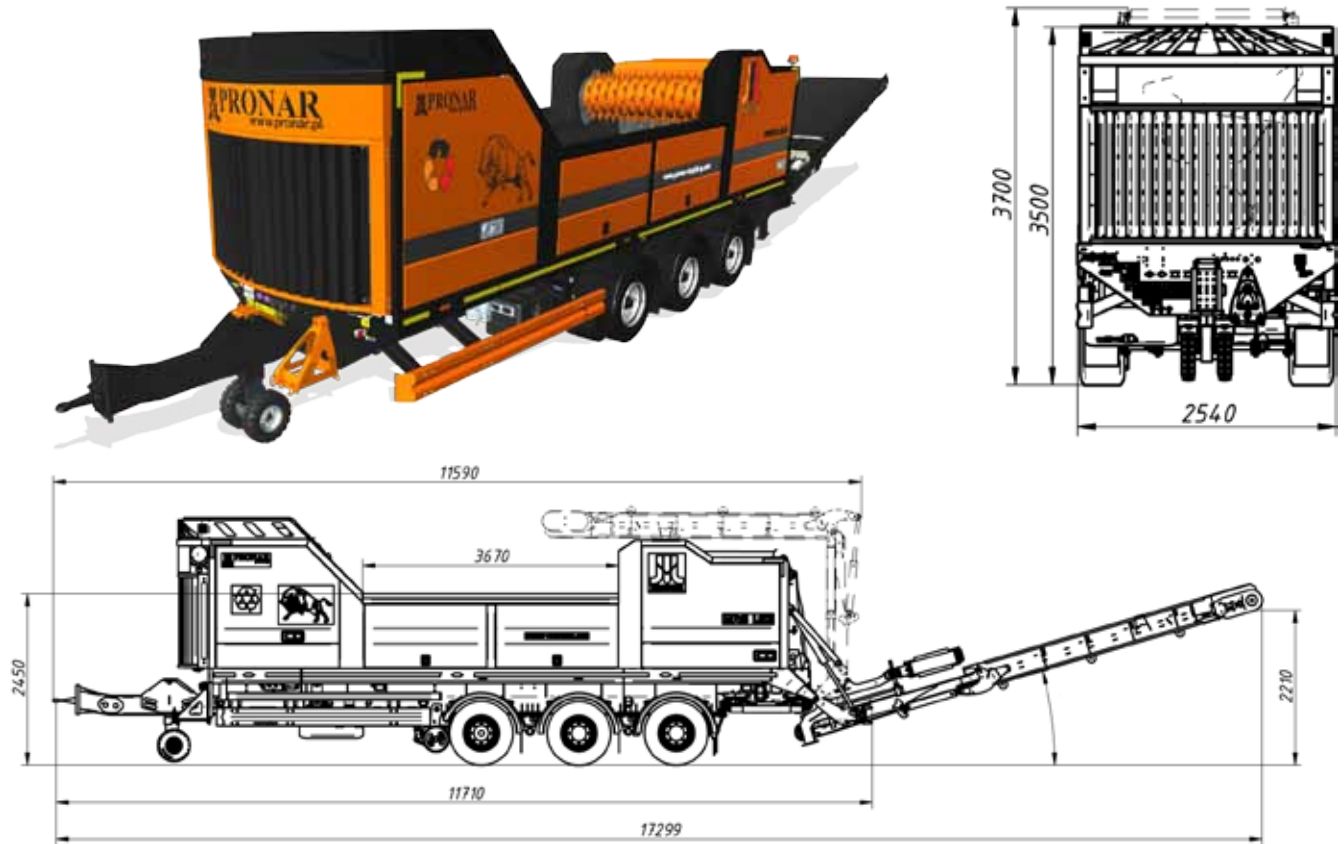
TRIDEM SUSPENSION		MRS 1.53
Total weight [kg]		~ 24 000
Dimensions [length/width/height] [mm]		12000 x 2550 x 3750
WORKING PARAMETERS		MRS 1.53
Number of shafts [Pcs.]		1
Shredding shaft dimensions (length/diameter) [mm]		1750 / 1100
Rotation speed [rpm]		1000
Loading height [mm]		2450
Working chamber dimensions (length/width) [mm]		3650 / 2200
DIESEL ENGINE		MRS 1.53
Engines		Volvo Penta (EU Stage 4, 13 L, -MAX: 389.81 kW (530 HP) / 1900 rpm)

Features and Standard equipment:

- easy sieve exchange
  - easy knives replacement
  - hydraulic front supporting leg
  - automatic cleaning system of engine cooler - Cleanfix
  - central lubrication system
  - wireless remote control
  - large spacious doors with easy access to engine and hydraulics
  - engine compartment lighting
  - stepless conveyor speed regulation
- demountable lighting beam
  - ABS and traction control (permissible speed up to 100 km / h)
  - fuel tank with a capacity of 700l

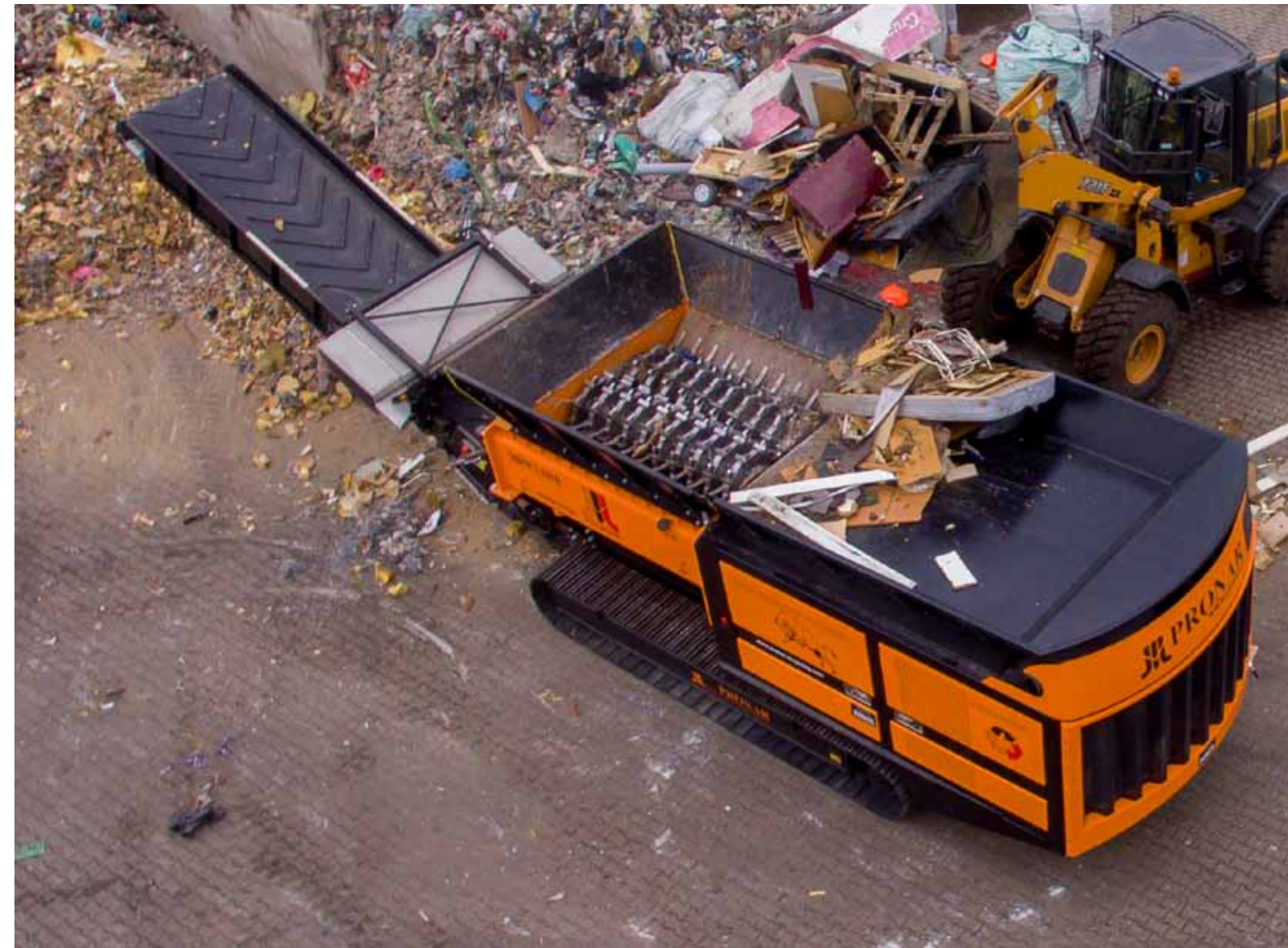
Additional and optional equipment:

- magnetic separator above the rear conveyor (overband) lowered / raised mechanically together with the conveyor
- ball coupling for towing
- lighting of work zones
- working knives for various materials





Shafts	Type of the shredded materials:
5-knives	<ul style="list-style-type: none"> <li>- wood waste (tree stumps, pallets, furniture)</li> <li>- municipal and industrial waste</li> <li>- household waste</li> <li>- bulky waste</li> <li>- tyres</li> <li>- aluminum</li> <li>- paper, paper bales</li> <li>- railroad sleepers</li> </ul>
6-knives	<ul style="list-style-type: none"> <li>wood waste (tree stumps, pallets, furniture)</li> <li>- municipal and industrial waste</li> <li>- household waste</li> <li>- bulky waste</li> <li>- tyres</li> <li>- aluminum</li> <li>- paper, paper bales</li> <li>- thin-walled scrap up to 2 mm thick</li> <li>- railroad sleepers</li> </ul>
8-knives	<ul style="list-style-type: none"> <li>- wood waste (tree stumps, pallets, furniture)</li> <li>- green waste</li> </ul>
10-knives	<ul style="list-style-type: none"> <li>- wood waste (tree stumps, pallets, furniture)</li> <li>- municipal and industrial waste</li> <li>- household waste</li> <li>- bulky waste</li> <li>- tyres</li> <li>- aluminum</li> <li>- paper, paper bales</li> <li>- thin-walled scrap up to 2 mm thick, car bodies</li> <li>- railroad sleepers</li> </ul>
36-knives (for the fast-speed shredders)	<ul style="list-style-type: none"> <li>- wood waste, pallets</li> <li>- green waste</li> </ul>
42-knives (for the single shaft slow speed shredders)	<ul style="list-style-type: none"> <li>- wood waste (tree stumps, pallets, furniture)</li> <li>- municipal and industrial waste</li> <li>- household waste</li> <li>- bulky waste</li> <li>- railroad sleepers</li> </ul>



5 - knives ring

6 - knives ring

8 - knives ring

10 - knives ring

36 - knives ring (high-speed)

42 - shredding knives





*Baan naar Bree 137, 3990 Peer*  
*0032 476 231 797*  
*info@herema.be*  
*www.herema.be*

*Herema recycling machinery*